

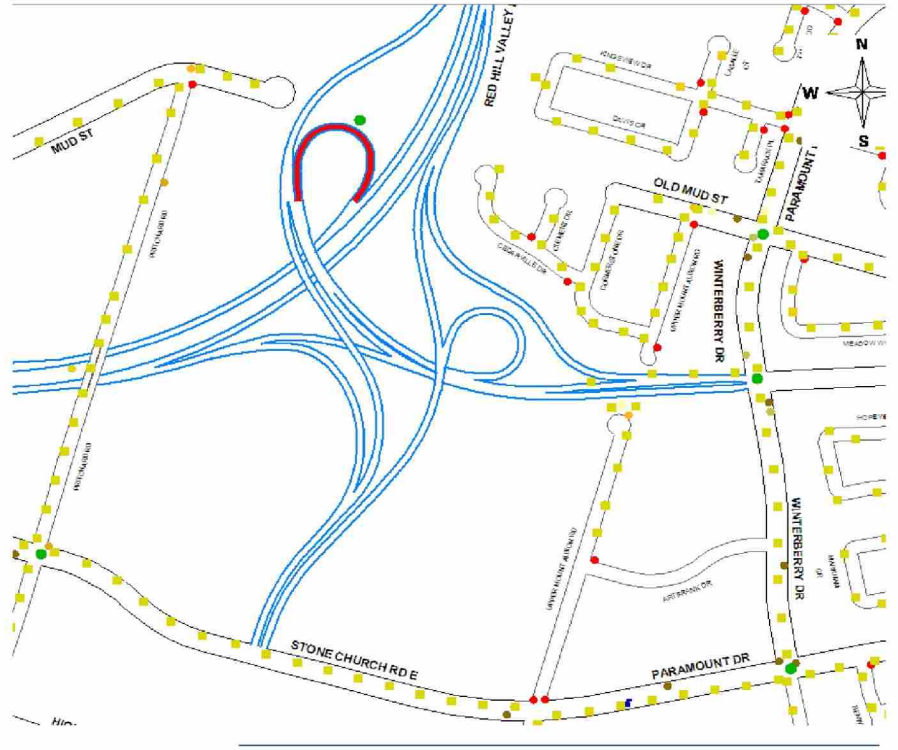


Hamilton
Public Works

**Traffic Engineering
Collision Countermeasure Review
Mud: SB – EB off ramp - RHVP
March 31, 2010**

Where is it? Which Ramp?

- Community
- People
- Processes
- Finance



What's the problem ?

Network Screening Summary 2004- 2008:

- Ranks 64 overall
- RHVP opened November 2007
- Test positive for Initial Impact = SMV other
- 16 SMV's of 16 total collisions
- Total collisions from RHVP opening to-date :
23 SMV'S of 25 collisions.

Patterns: Lost control ; Excessive Speeding

- 21 PD ; 4 non-fatal injuries



Hamilton
Public Works

Collision Summary

- Community
- People
- Processes
- Finance



Hamilton
Public Works

Road Conditions	Driver Action
Dry Pavement	8 Lost control; 3 Speeding
Wet Pavement	3 Lost Control; 8 Speeding; 3 Driving Properly

The Ramp – Slippery when wet



Hamilton
Public Works

First 30km/h advisory speed limit



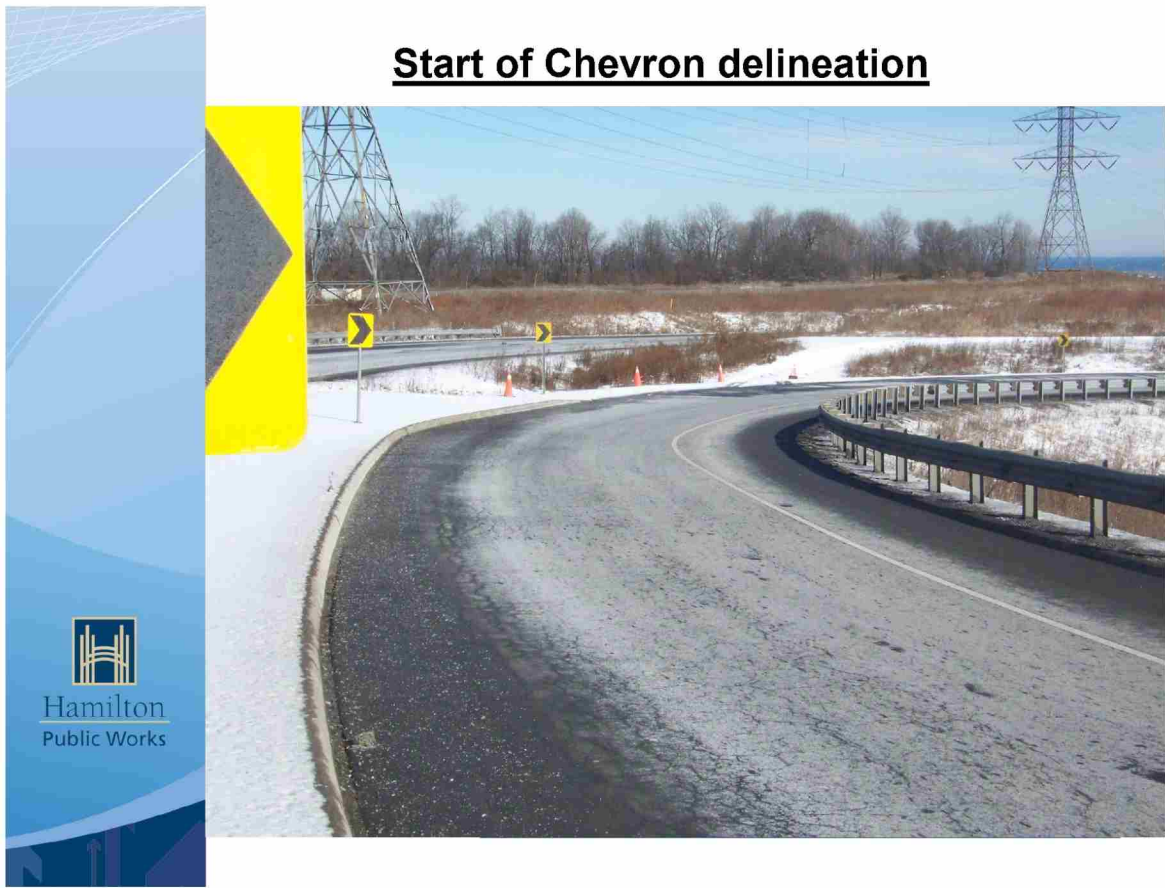
Hamilton
Public Works

Second 30km/h advisory speed limit



Hamilton
Public Works

Start of Chevron delineation



Knocked down Chevrons, run off area



Hamilton
Public Works















Short term solutions

- Chevrons were installed January 2009
- Re-install missing Chevrons
- Over size the 30 km/h signs
- Over size the Chevron signs
- Rumble Strips

Long Range Recommendations

Street lighting

Jersey wall barrier
